

Peter Tufts Jr. House

Medford, Massachusetts

Project Highlights

Building is a listed National Historic Landmark with Historic New England easements.

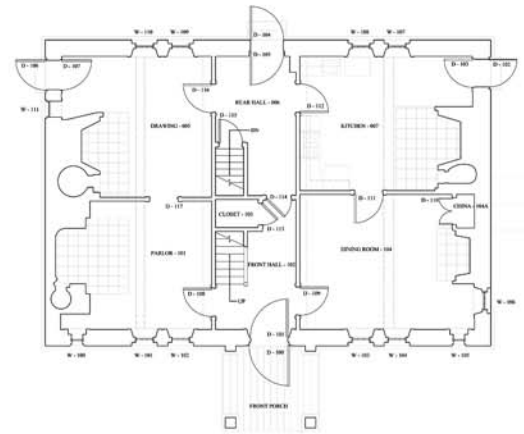
Existing condition information assists with asset management.

Building is being analyzed for new uses.

The Tufts House, right, and drawings produced, below. The building is an important example of seventeenth century architecture.



Front Elevation



First Floor Plan

Your Project, Our Role...

Founded in 1896, the Medford Historical Society is the oldest extant Medford preservation group. They maintain the circa 1670 Peter Tufts House, a national historic landmark. The building was built by a predominant citizen and was occupied by his and other important families. It was owned by SPNEA for a time before being sold to the Society.

Our firm documented existing conditions for this building to be utilized in future management.

The Preservation Collaborative specializes in the documentation of historic properties. With a decade or more of experience in this area, we are knowledgeable about getting the task at hand complete.

We pride ourselves in working with small and large museums. Often having multiple resources to manage, our firm assists in ensuring sustainability, allowing historic properties remain at the forefront of your collection for decades to come.

