

Porter House

Medford, Massachusetts

Project Highlights

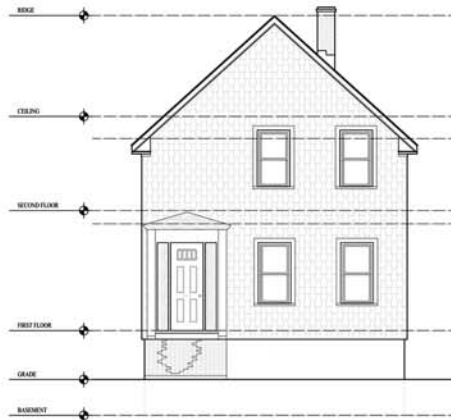
Circa 1855 building was one of twelve built.

Occupied by middleclass families throughout its history.

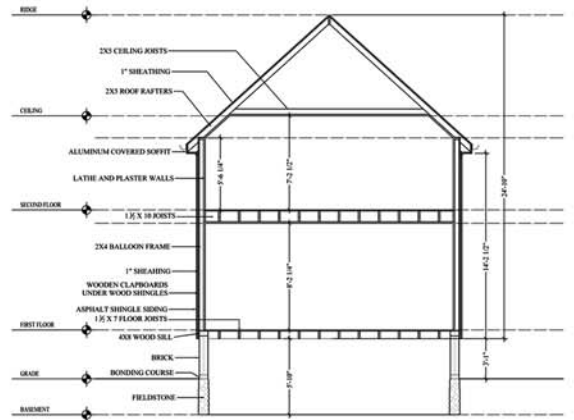
Important as an early example of speculative building.

Early balloon frame building.

The Porter House (right) and drawings for record (below).



Front Elevation



Building Section

Your Project, Our Role...

The Preservation Collaborative extensively researched the circa 1855 William S. Porter House for the Medford Historical Commission.

William S. Porter was a cooper from Boston. He and other middleclass residents lived here through the 1990's. The house was one of twelve constructed around 1855 for people of similar means.

Our work included a MHC form B, A, and measured plans and photos.

The Preservation Collaborative has the resources for you to document potential tear downs.

Our consultants have key understanding of local repositories. We can efficiently research and decode a building's past. With the addition of physical analysis, we can help you learn everything about the historic past life of your most valuable asset.

Contact us today to get started!

