

M. E. Nichols House

Medford, Massachusetts

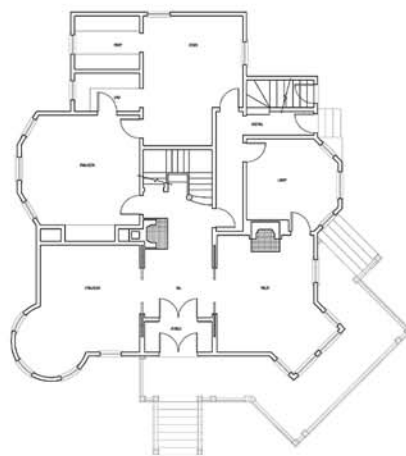
Project Highlights

Documentation for a private client of an 1880 Queen Anne residence.

Existing conditions based off original blueprints.

Building is listed on the National Register of Historic Places.

M. E. Nichols Residence as seen from the street. Floor plan and elevation samples are provided below.



First Floor Plan



Front Elevation

Your Project, Our Role...

Our firm documented the 1880 M.E. Nichol House in Medford for a private client. This historic home is a magnificent work of Queen Anne architecture. It has been lovingly restored by the present owner over the past 20 years.

Documentation included viewing existing conditions and utilizing existing plans.

The Preservation Collaborative specializes in the documentation of historic properties. With a decade or more of experience in this area, we are knowledgeable about getting the task at hand complete.

We pride ourselves in working with residential customers. Knowing home is your most valuable asset, we strive to help you make the most of your cherished property. Contact us today!

