

New Salem Academy

New Salem, Massachusetts

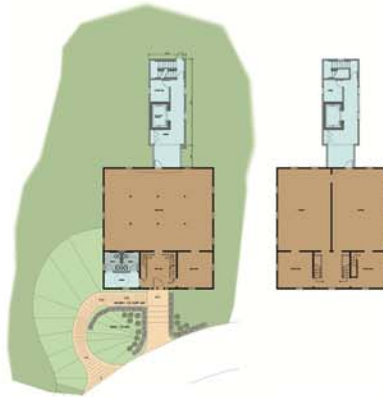
Project Highlights

New Salem Academy is listed on the National Register of Historic Places.

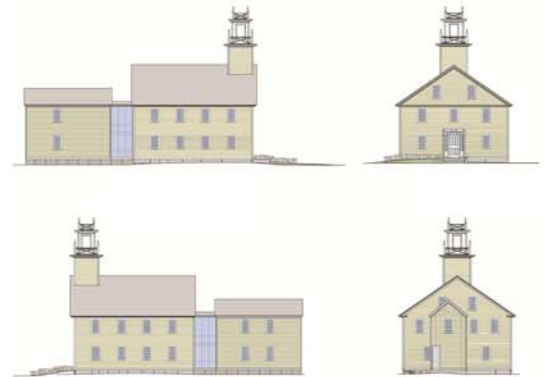
Building is one of the largest stacked plank construction structures in New England.

New addition will allow the ensured survival of this property.

New Salem Academy, right. The building is presently being restored by the New Salem Historical Commission. Sample floor plans and elevations are included, below.



Site and Floor Plans



Elevation Renderings

Your Project, Our Role...

The New Salem Academy building is one of the oldest institutions in New England. This particular building is one of the largest stacked plank structures, a rare form of building in this region.

Working under B. Goba & Associates, P.C., the New Salem Historical Commission contacted BGA to provide an accessibility study for the building. Our firm assisted in developmental drawings.

The Preservation Collaborative works with the revitalization of historic properties. With years of experience we are knowledgeable about getting the task at hand complete.

We pride ourselves in working with small and large organizations. Often having multiple resources to manage, our firm assists in ensuring sustainability, allowing historic properties remain at the forefront of your collection for decades to come.

