

Medford Historical Society

Medford, Massachusetts

Project Highlights

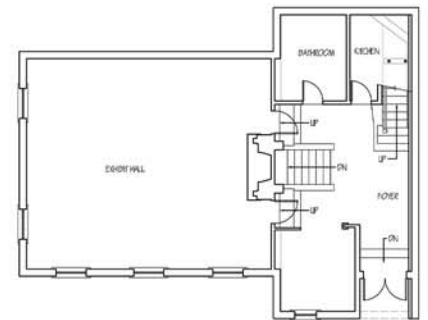
Building is an iconic structure in Medford, representing a handful of Spanish Mission style buildings.

Existing condition information assists with asset management.

The society's building, right, and drawings, below. This structure is a well preserved example of the Spanish Mission style.



Front Elevation



First Floor Plan

Your Project, Our Role...

Founded in 1896, the Medford Historical Society is the oldest extant Medford preservation group. The Society built their current building in 1916 in the Spanish Mission Style. This iconic building is one of a handful of this design in the city. The organization uses it as their headquarters.

Our firm documented existing conditions for this building to be utilized in future management.

The Preservation Collaborative specializes in the documentation of historic properties. With a decade or more of experience in this area, we are knowledgeable about getting the task at hand complete.

We pride ourselves in working with small and large museums. Often having multiple resources to manage, our firm assists in ensuring sustainability, allowing historic properties remain at the forefront of your collection for decades to come.

