

Porter House

Medford, Massachusetts

Project Highlights

Circa 1875 building was a good representation of early land development.

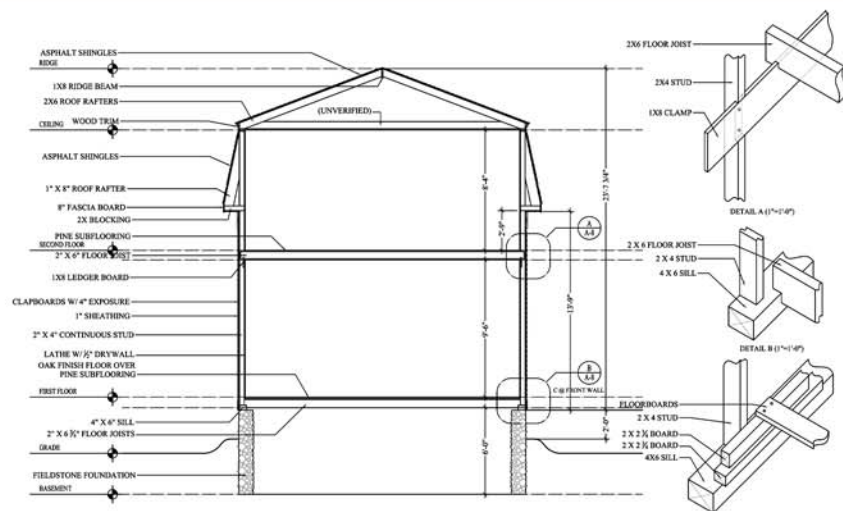
Occupied by middleclass families throughout its history.

Important as an good example of second empire style.

Building construction details helped date the structure and its numerous changes.



The Porter House (right) and drawings for record (below).



Building Section

Your Project, Our Role...

The Preservation Collaborative extensively researched the circa 1875 Daniel and Elizabeth Lynah for the Medford Historical Commission.

Daniel Lynah was an Irish immigrant plumber. Their occupancy was short. The house later was owned by other immigrants until the mid 2000's. It is a good representation of early building within the area.

Our work included a MHC form B, measured plans and photos.

The Preservation Collaborative has the resources for you to document potential tear downs.

Our consultants have key understanding of local repositories. We can efficiently research and decode a building's past. With the addition of physical analysis, we can help you learn everything about the historic past life of your most valuable asset.

Contact us today to get started!

