

Thomas Clark House

Belmont, Massachusetts

Project Highlights

Our firm worked to document the historic house for an as-built record.

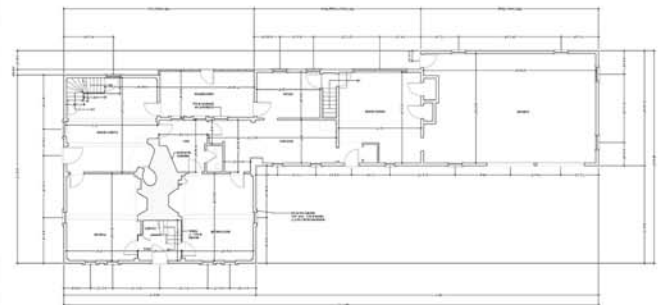
Documentation work was completed in conjunction with the relocation of the building.

Drawings will be utilized to recreate a new single family building, intergrating parts of the 18th century structure as a focal feature.

Our firm provided existing condition drawings and photographs. This record will be used to recreate demolished portions of this building once relocated.



Front Elevation



First Floor Plan

Your Project, Our Role...

The Preservation Collaborative worked to document the historic Thomas Clark House in Belmont. This circa 1760 dwelling saw multiple periods of alteration and is of considerable significance to the town.

Our firm provided as-built documentation to the Belmont Historical Commission to help assist in the post relocation recreation of later wings to create a single family residence.

The Preservation Collaborative specializes in the documentation of historic properties. With more than a decade of experience in this area, we are knowledgeable about getting the task at hand complete.

We pride ourselves in working with small and large museums. Often having multiple resources to manage, our firm assists in ensuring sustainability, allowing historic properties remain at the forefront of your collection for decades to come.

